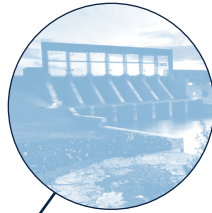




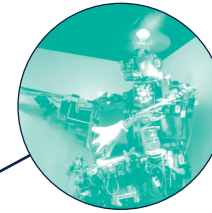
**4. POWERING UP THE FARM  
1942–1960**

How were the rural regions of Manitoba connected to the provincial power system? What role did home economists play?



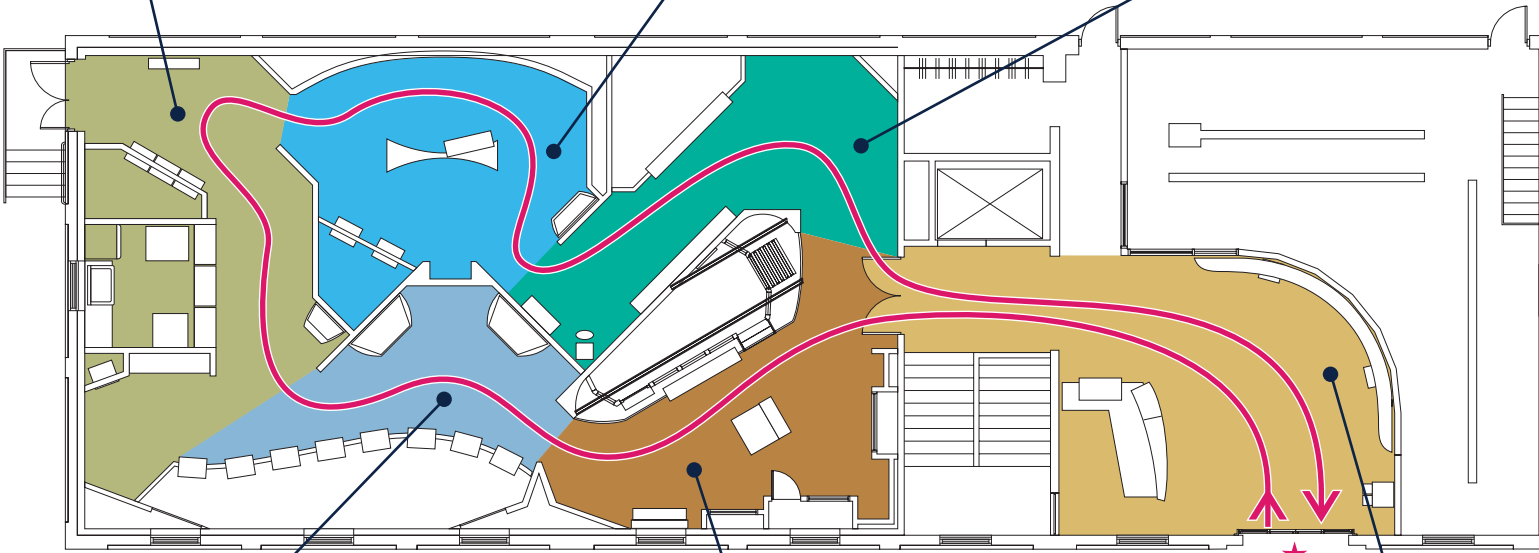
**5. POWER FROM THE NORTH  
1960–1999**

Which northern river has the potential to provide Manitobans with fifteen times the power of the Winnipeg River?

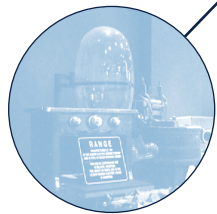


**6. INTO THE FUTURE**

What does the electric future hold? How can people conserve energy and what does it mean to be energy efficient?

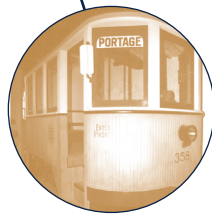


680 Harrow Street  
Winnipeg, Manitoba  
Tel: 204-360-7905  
Email: [museum@hydro.mb.ca](mailto:museum@hydro.mb.ca)  
[www.hydro.mb.ca/museum](http://www.hydro.mb.ca/museum)



**3. ENERGIZING MANITOBA  
1900–1960**

What did early electric appliances look like? How did Manitoba meet the growing demand for electricity?



**2. THE LIGHT GOES ON  
1882–1900**

What did people use before electricity? What was electricity first used for?



**1. THE ELECTRIC CENTURY  
1900–2000**

Why is the 20th century known as the electric century?

*Welcome to the Manitoba Electrical Museum and Education Centre. As you enter the gallery, travel back in time to the “Dark Ages” of Manitoba. Can you imagine what life was like before electricity? Think of ways you use it every day. Then, begin an exciting journey as you trace the path of electrical development in Manitoba. See some of the most unusual contraptions in electrical history.*

*Don't forget to visit the lower level of the museum to find more interesting displays.*